

“Oracle Common Infrastructure Service Repository” für Fusion Middleware anlegen – Screenshots

Detail siehe

https://www.pipperr.de/dokuwiki/doku.php?id=forms:oracle_reports_12c_r2_windows64

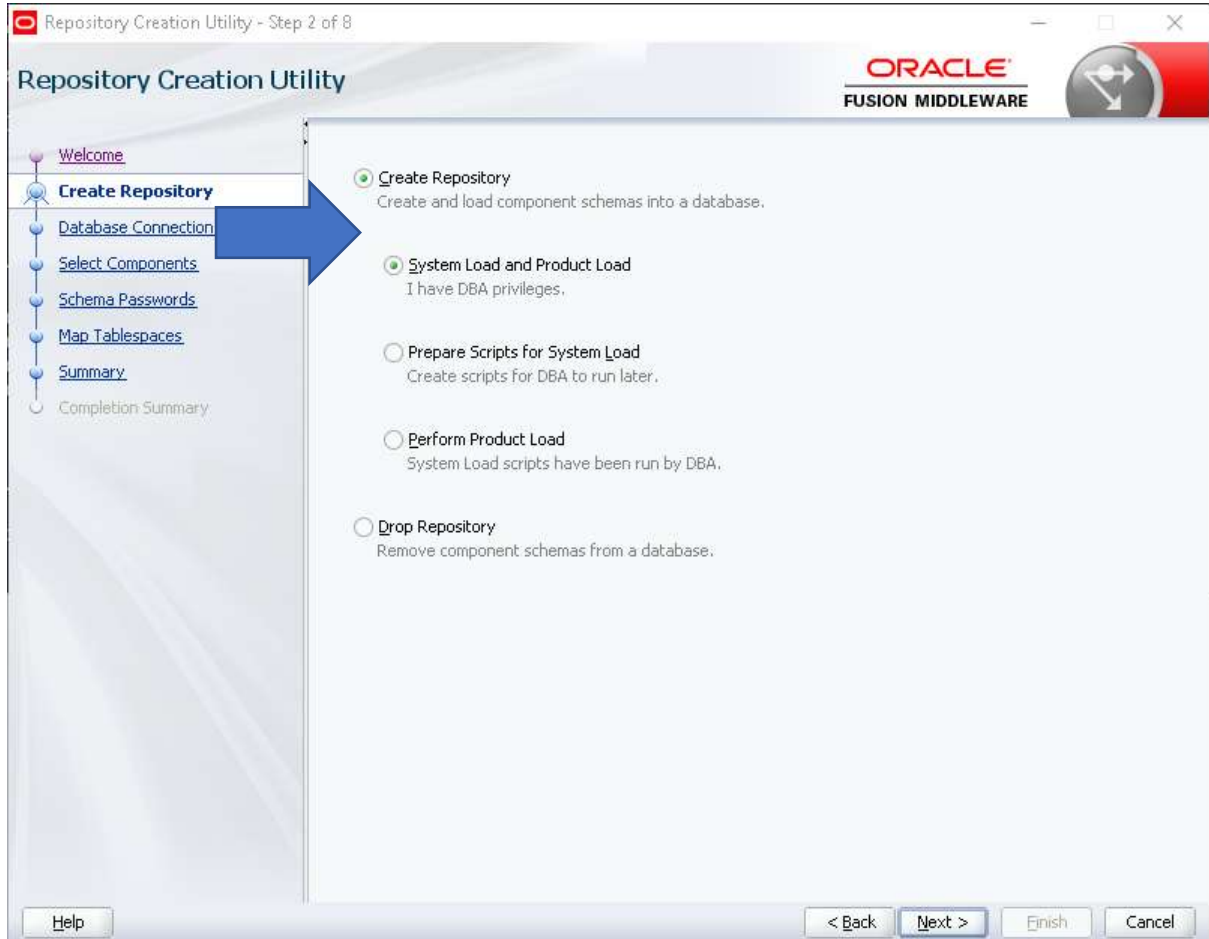
Eintrag der gewählten Datenbank in die tnsnames.ora, Test das vom Server eine Verbindung zur Repository Datenbank möglich ist.

Aufruf des RCU Utils mit => D:\oracle\fmw\oracle_common\bin>rcu.bat

Welcome => Next



Create Repository ⇒ „Create Repository“ „System Load and Product Load“ ⇒ Next



Database Connection Details ⇒ Oracle Database, „Connection Parameters“ Werte ausfüllen ⇒ Next ⇒ OK

Repository Creation Utility - Step 3 of 8

Repository Creation Utility

ORACLE
FUSION MIDDLEWARE

Navigation:

- Welcome
- Create Repository
- Database Connection Details**
- Select Components
- Schema Passwords
- Map Tablespaces
- Summary
- Completion Summary

Database Type: Oracle Database

Connection String Format: Connection Parameters Connection String

Connect String:

Host Name: 10.10.10.1

Pprt: 1521

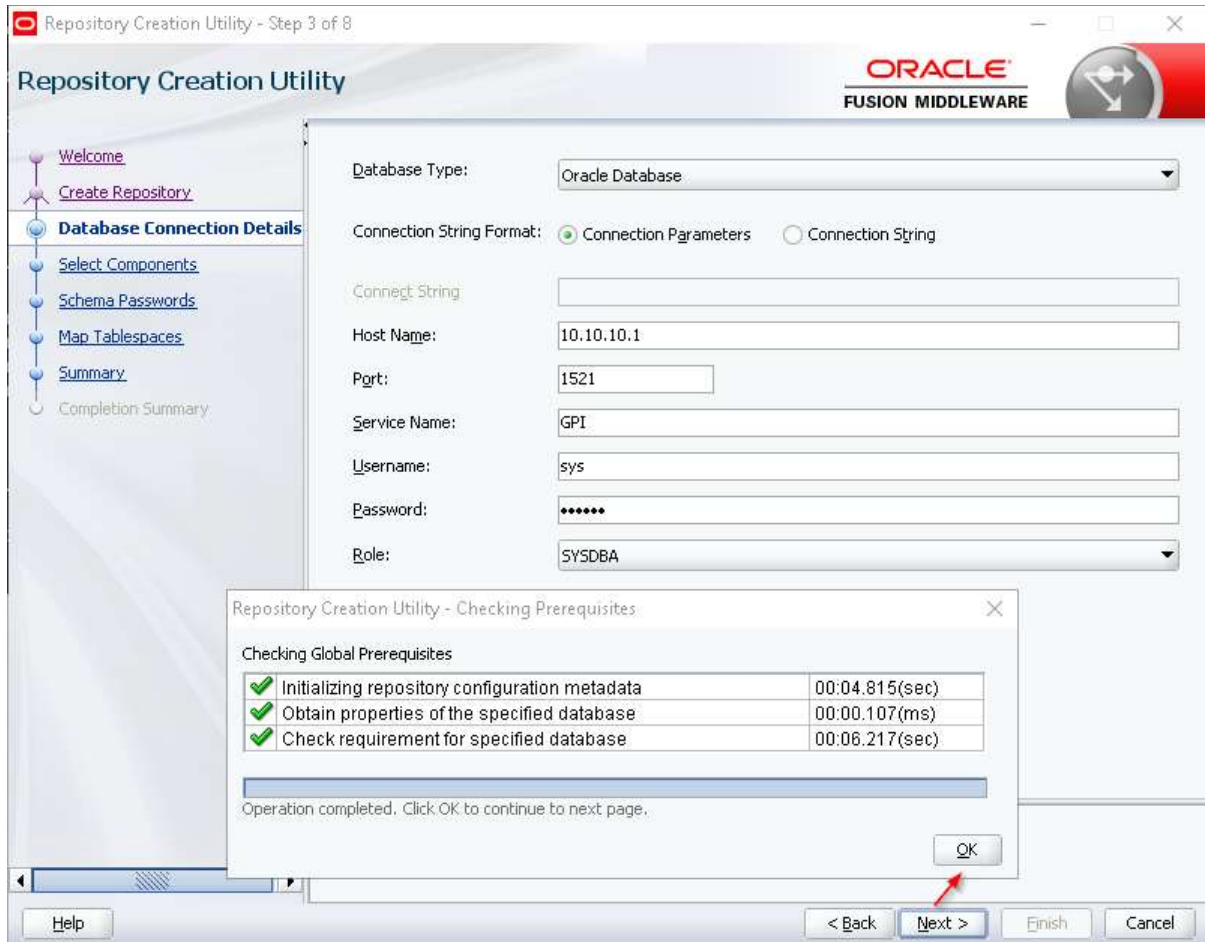
Service Name: GPI

Username: sys

Password:

Role: SYSDBA

Buttons: Help, < Back, Next >, Finish, Cancel



Select Components ⇒ „Create new prefix:“ SPA - Oberste Ebene anwählen
 „STB,OPSS,IAU,IAU_APPEND,IAU_VIEWWR,MDS,WLS,UMS“ ⇒ Next ⇒ OK

Repository Creation Utility - Step 4 of 8

ORACLE
FUSION MIDDLEWARE

Specify a unique prefix for all schemas created in this session, so you can easily locate, reference, and manage the schemas later.

Select existing prefix:

Create new prefix:

Alpha numeric only. Cannot start with a number. No special characters.

Component	Schema Owner
<input checked="" type="checkbox"/> Oracle AS Repository Components	
<input checked="" type="checkbox"/> AS Common Schemas	
<input checked="" type="checkbox"/> Common Infrastructure Services *	SPAREPORT_STB
<input checked="" type="checkbox"/> Oracle Platform Security Services	SPAREPORT_OPSS
<input checked="" type="checkbox"/> User Messaging Service	SPAREPORT_UMS
<input checked="" type="checkbox"/> Audit Services	SPAREPORT_IAU
<input checked="" type="checkbox"/> Audit Services Append	SPAREPORT_IAU_APPEND
<input checked="" type="checkbox"/> Audit Services Viewer	SPAREPORT_IAU_VIEWER
<input checked="" type="checkbox"/> Metadata Services	SPAREPORT_MDS
<input checked="" type="checkbox"/> Weblogic Services *	SPAREPORT_WLS

* Mandatory component. Mandatory components cannot be deselected.

Help < Back Next > Finish Cancel

Hier ist es wichtig ein Projekt Prefix zu vergeben, Idee ist wohl mehrere Fusion Middleware Umgebungen in einem Repository zu verwalten, allerdings ist das mit Vorsicht zu genießen, ein Test mit Oracle Primavera 8 fiel negativ aus, zuvor also testen ob das inzwischen wirklich funktioniert!

Schema Passwords ⇒ „Specify different passwords for all schemas“ ⇒ PWD ausfüllen
⇒ Next

Repository Creation Utility - Step 5 of 8

Repository Creation Utility **ORACLE**
FUSION MIDDLEWARE

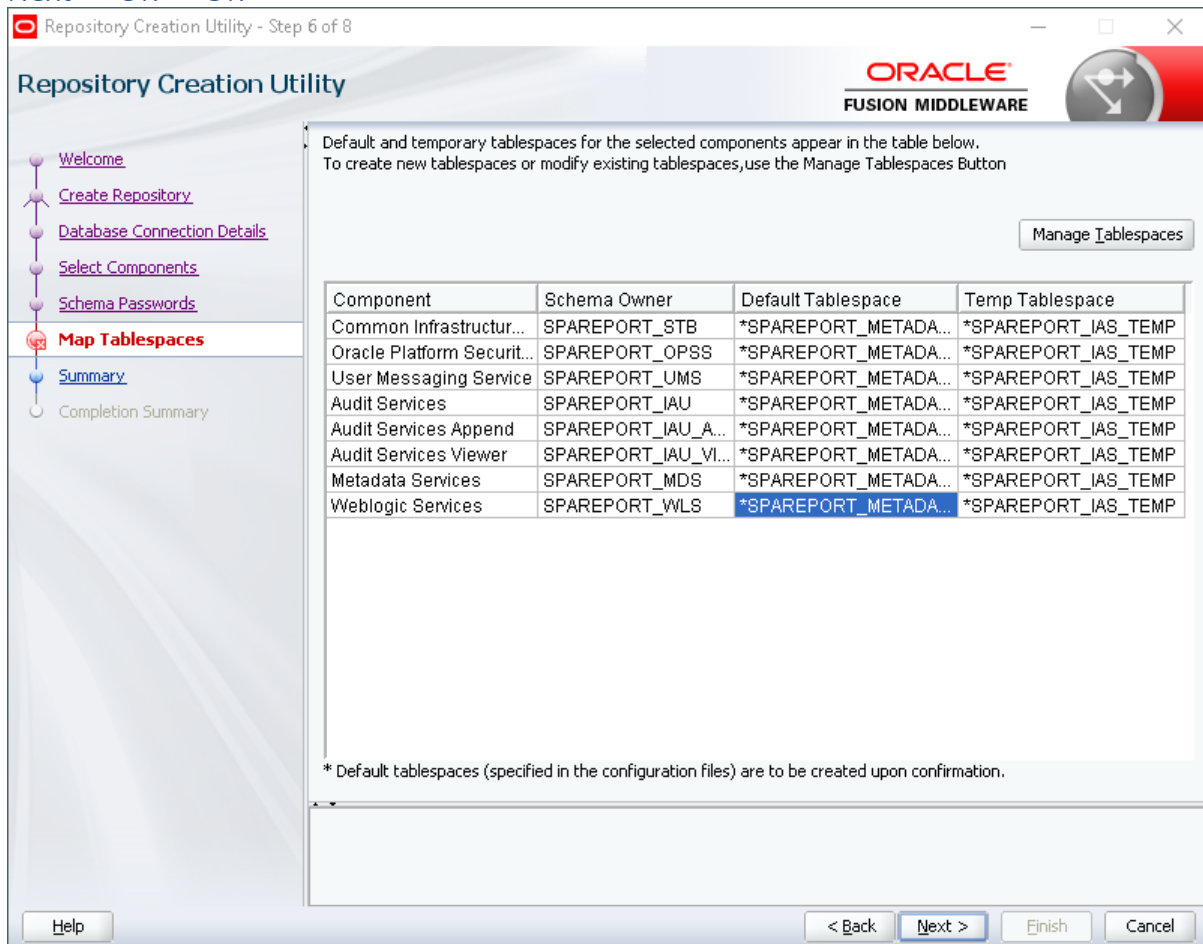
Define passwords for main and auxiliary schema users.

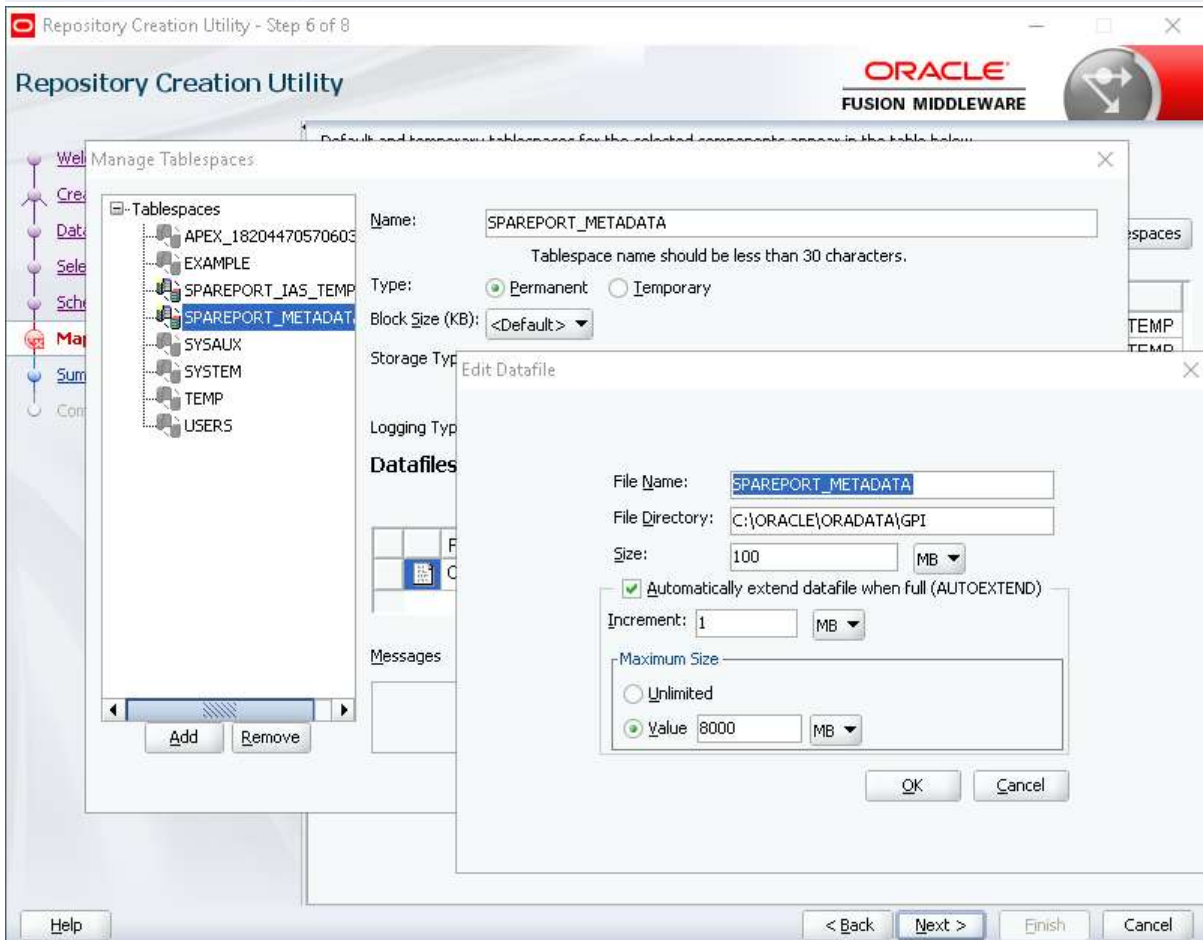
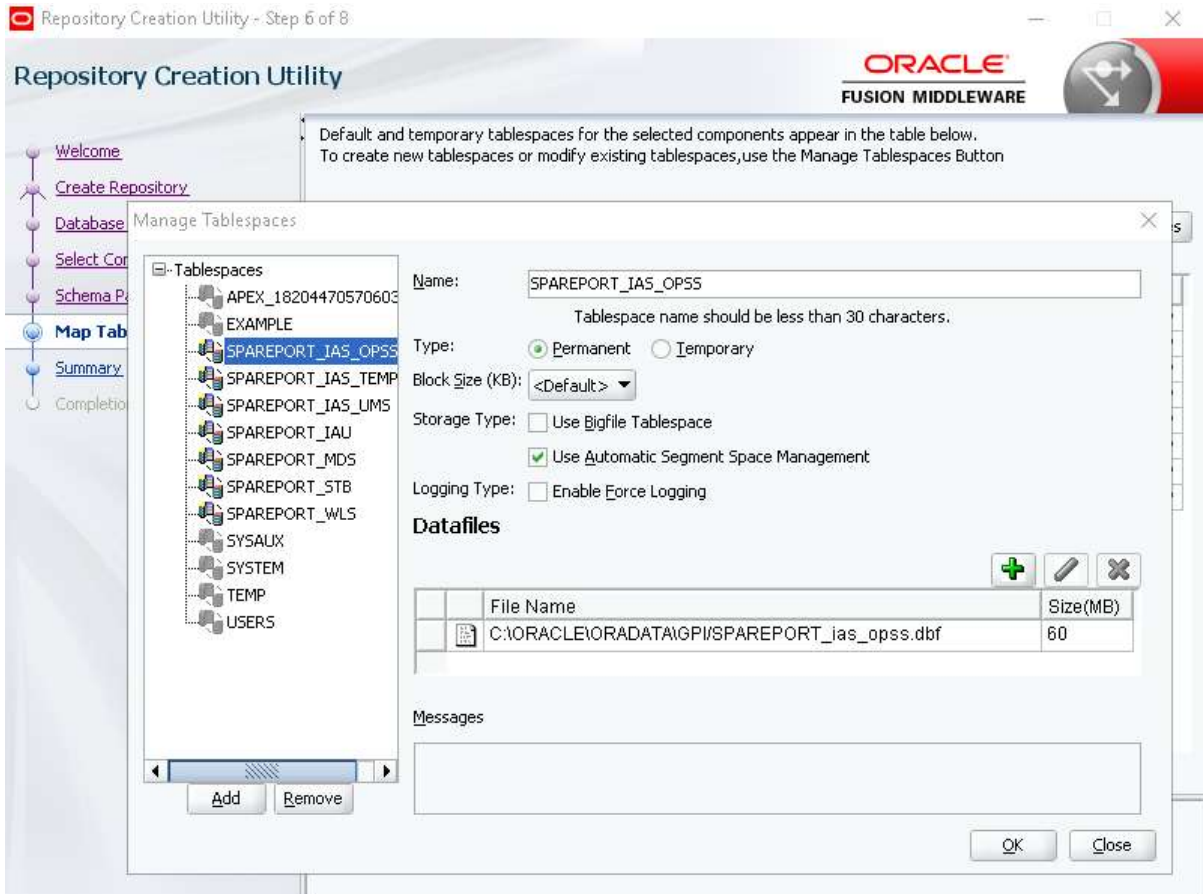
Use same passwords for all schemas
 Use main schema passwords for auxiliary schemas
 Specify different passwords for all schemas

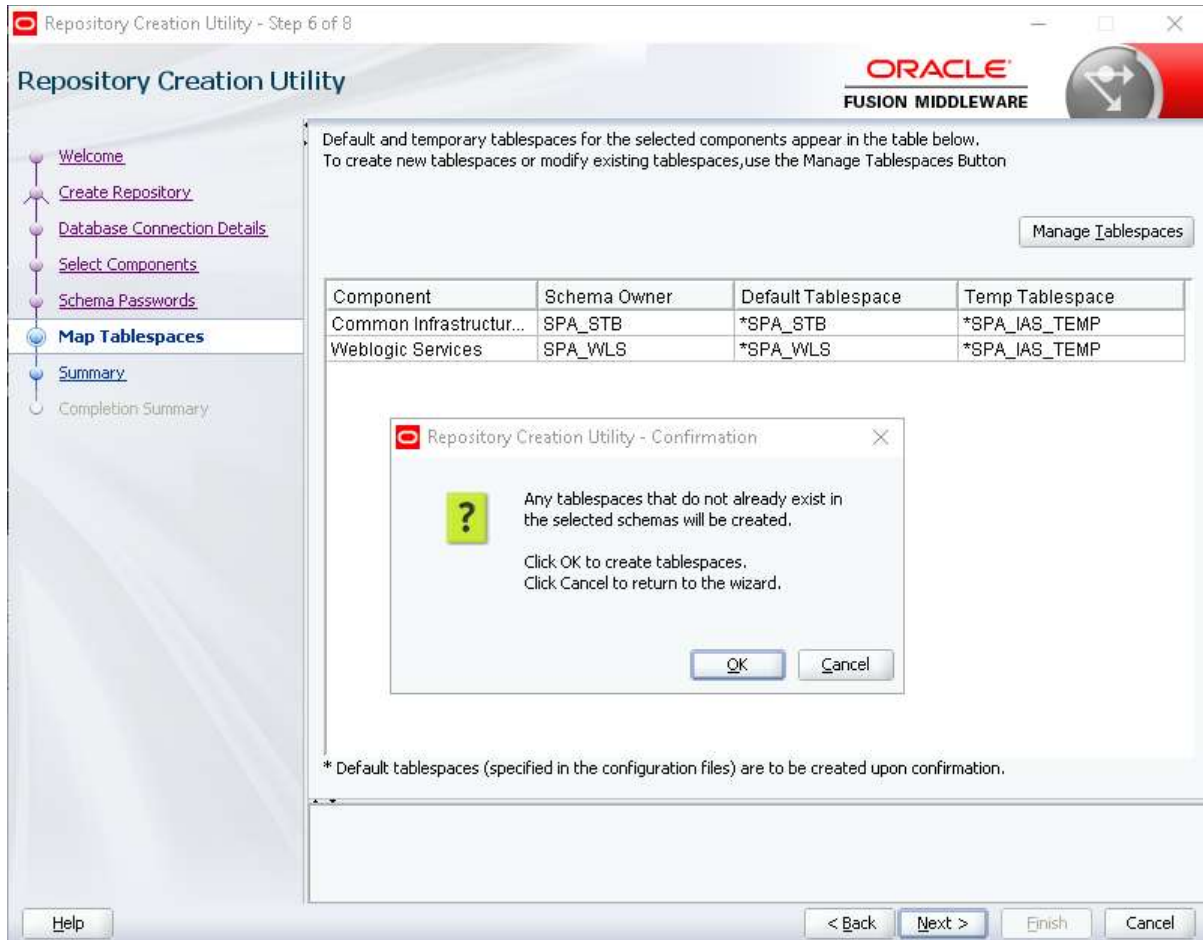
Component	Schema Owner	Schema Password	Confirm Password
Common Infrastructure Services	SPAREPORT_STB	*****	*****
Oracle Platform Security Services	SPAREPORT_OPSS	*****	*****
User Messaging Service	SPAREPORT_UMS	*****	*****
Audit Services	SPAREPORT_IAU	*****	*****
Audit Services Append	SPAREPORT_IAU_APPEND	*****	*****
Audit Services Viewer	SPAREPORT_IAU_VIEWER	*****	*****
Metadata Services	SPAREPORT_MDS	*****	*****
Weblogic Services	SPAREPORT_WLS	*****	*****
Auxiliary Schema	SPAREPORT_WLS_RUNTIME	*****	*****

Help < Back Next > Finish Cancel

Map Tablespaces ⇒ Alles Default lassen oder nach eigenen Vorstellung einstellen ⇒
Next ⇒ OK ⇒ OK







Repository Creation Utility - Step 6 of 8

ORACLE
FUSION MIDDLEWARE

Repository Creation Utility

- Welcome
- Create Repository
- Database Connection Details
- Select Components
- Schema Passwords
- Map Tablespaces**
- Summary
- Completion Summary

Default and temporary tablespaces for the selected components appear in the table below.
To create new tablespaces or modify existing tablespaces, use the Manage Tablespaces Button

Manage Tablespaces

Component	Schema Owner	Default Tablespace	Temp Tablespace
Common Infrastructur...	SPAREPORT_STB	*SPAREPORT_STB	*SPAREPORT_IAS_TEMP
Oracle Platform Securit...	SPAREPORT_OPSS	*SPAREPORT_IAS_OPSS	*SPAREPORT_IAS_TEMP
User Messaging Service	SPAREPORT_UMS	*SPAREPORT_IAS_UMS	*SPAREPORT_IAS_TEMP
Audit Services	SPAREPORT_IAU	*SPAREPORT_IAU	*SPAREPORT_IAS_TEMP
Audit Services Append	SPAREPORT_IAU_A...	*SPAREPORT_IAU	*SPAREPORT_IAS_TEMP
Audit Services Viewer	SPAREPORT_IAU_VI...	*SPAREPORT_IAU	*SPAREPORT_IAS_TEMP
Metadata Services	SPAREPORT_MDS	*SPAREPORT_MDS	*SPAREPORT_IAS_TEMP
Weblogic Services	SPAREPORT_WLS	*SPAREPORT_WLS	*SPAREPORT_IAS_TEMP

* Default tablespaces (specified in the configuration files) are to be created upon confirmation.

Help < Back Next > Finish Cancel

Summary ⇒ Create Summary ⇒ Create

Repository Creation Utility - Step 7 of 8

Repository Creation Utility

ORACLE
FUSION MIDDLEWARE

Database details:

Host Name: 10.10.10.1
 Port: 1521
 Service Name: GPI
 Connected As: sys
 Operation: System and Data Load concurrently
 Prefix for (prefixable) Schema Owners: SPAREPORT

Component	Schema Owner	Tablespace Type	Tablespace Name
Common Infrastructure Services	SPAREPORT_STB	Default	SPAREPORT_METADATA
		Temp	SPAREPORT_IAS_TEMP
		Additional	[None]
Oracle Platform Security Services	SPAREPORT_OPSS	Default	SPAREPORT_METADATA
		Temp	SPAREPORT_IAS_TEMP
		Additional	[None]
User Messaging Service	SPAREPORT_UMS	Default	SPAREPORT_METADATA
		Temp	SPAREPORT_IAS_TEMP
		Additional	[None]
Audit Services	SPAREPORT_IAU	Default	SPAREPORT_METADATA
		Temp	SPAREPORT_IAS_TEMP
		Additional	[None]
Audit Services Append	SPAREPORT_IAU_APPEND	Default	SPAREPORT_METADATA
		Temp	SPAREPORT_IAS_TEMP
		Additional	[None]

Save Response File

Help < Back Next > Create Cancel

Repository Creation Utility - Step 7 of 8

ORACLE
FUSION MIDDLEWARE

Repository Creation Utility

Database details:

Host Name: 10.10.10.1
 Port: 1521
 Service Name: GPI
 Connected As: sys
 Operation: System and Data Load concurrently
 Prefix for (prefixable) Schema Owners: SPA

Component	Schema Owner	Tablespace Type	Tablespace Name
Common Infrastructure Services	SPA_STB	Default	SPA_STB
		Temp	SPA_IAS_TEMP
		Additional	[None]
			SPA_WLS
			SPA_IAS_TEMP
			[None]

Repository Creation Utility - System Load

Repository System Load in progress.

✓ Execute pre create operations	00:03.421(sec)
✓ Common Infrastructure Services	00:09.687(sec)
⌚ Weblogic Services	00:12.587(sec)
Execute post create operations	0

Buttons: Help, < Back, Next >, **Create**, Cancel

Completion Summary ⇒ Close

Repository Creation Utility - Step 8 of 8

ORACLE
FUSION MIDDLEWARE

Repository Creation Utility

- Welcome
- Create Repository
- Database Connection Details
- Select Components
- Schema Passwords
- Map Tablespaces
- Summary
- Completion Summary**

Database details:

Host Name: 10.10.10.1
 Port: 1521
 Service Name: GPI
 Connected As: sys
 Operation: System and Data Load concurrently
 Execution Time: 2 minutes 5 seconds

RCU Logfile: D:\temp\Temp2\RCU2017-11-09_01-23_626768880\logs\rcu.log
 Component Log Directory: D:\temp\Temp2\RCU2017-11-09_01-23_626768880\logs
 View Log: rcu.log

Prefix for (prefixable) Schema SPAREPORT
 Owners

Component	Status	Time	Logfile(Click to view)
Common Infrastructure Services	Success	00:09.576(sec)	stb.log
Oracle Platform Security Services	Success	00:22.875(sec)	opss.log
User Messaging Service	Success	00:14.536(sec)	ucsums.log
Audit Services	Success	00:14.621(sec)	iau.log
Audit Services Append	Success	00:09.295(sec)	iau_append.log
Audit Services Viewer	Success	00:09.353(sec)	iau_viewer.log
Metadata Services	Success	00:16.350(sec)	mds.log
Weblogic Services	Success	00:15.371(sec)	wls.log

Help < Back Next > Create Close